

YOU CAN DO IT MODIFICATION

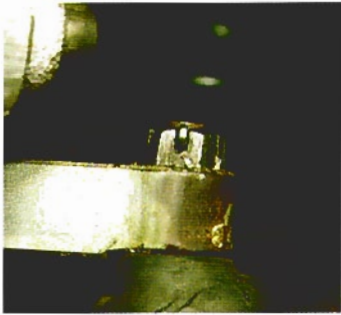


Photo #11: Install the outer tie rod end, nut and new cotter pin.



Photo #15: The top shaft of the shock absorber mounts to the top of the frame with a rubber grommet, washer and nut.

Photo #12: We are installing the new front and rear QA1 aluminum adjustable shock absorbers. These shocks have twelve different damping adjustments so you can tune the suspension anywhere from a soft ride to a very firm, high performance ride.



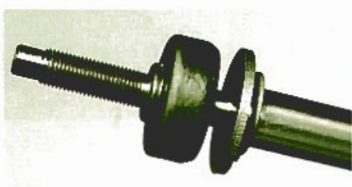
Photo #16: With the shock installed, the damping adjuster can be reached easily using a flat blade screwdriver between the coils of the spring.



Photos #13a & #13b: The shock adjusting knob is located at the bottom of the shock. When the shock is installed, the adjusting knob will face outboard. A small notch will need to be cut in the lower control arm to allow the adjusting knob on the front shocks to pass through the shock absorber hole.



Photo #14: There are 12 adjustments on the shock absorber. By turning the adjusting knob clockwise, the shock will become firmer. By turning the adjusting knob counterclockwise, the shock will become softer. You can actually feel the changes in damping by pulling the shock absorber in and out. We will initially set the adjuster at six turns to the right to see how the ride feels.

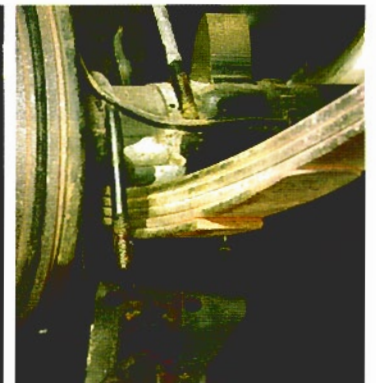


Photos #14a & #14b: At the top of the shock, install one cupped washer and one rubber grommet. Pass the shock up through the lower control arm hole and bolt it to the lower control arm.



Rear End

Photo #17: The rear end is held to the leaf springs with two U-bolts, nuts and a lower shock plate per side. First remove the 3/4" nut that holds the shock to the lower shock plate.



Photos #18a & #18b: Remove the four 3/4" nuts from the U-bolts and remove the lower shock plate.



Photo #19: With the U-bolts removed raise the rear end up off the leaf springs.