

**" THIS ARTICLE IS INTENDED FOR YOUR REFERENCE ONLY.**

**ACTUAL PARTS, YEARS AND BODY STYLES CONTAINED**

**IN THIS ARTICLE MAY DIFFER SLIGHTLY FROM YOUR APPLICATION. "**

# 1955-1957 TechHelp

## Low Fuel Warning Light Module

Classic Chevy is the first to introduce a new low fuel module. This device will turn on a warning light when your fuel level gets dangerously low. The module mounts underneath the dash and can be wired up in a matter of a few minutes. The kit, **Part #29-80, member price \$49.95**, comes complete with an amber warning light and all wiring connectors. **(See photo #1.)**

<i>Part #</i>	<i>Description</i>
29-80	Low fuel warning light module

The light itself can be mounted anywhere you want. We mounted the light on the fuel gauge. We are working on a 1955 Chevy, but this kit can be used on any vehicle, including all '55-'72 Chevrolets. **(See photo #2.)**

We mounted the light on the empty side of the gauge. First, drill a 1/8" pilot hole. Make sure to anchor down the gauge and support the face with a heavy piece of steel or you will destroy the face of the gauge. **(See photo #3.)**

Next, drill a 4mm hole. **(See photo #4.)**

It may be necessary to drill a hole in the rear of the gauge in order to provide an exit for the wires. **(See photo #5.)**

Now install the light. **(See photo #6.)**

Next, remount the gauge to the cluster frame. **(See photo #7.)**

The light will barely be visible when assembled, but when the fuel level drops low, it will illuminate the E-side of the gauge. **(See photo #8.)**

Refer to **Diagrams #1 & #2** for details. Good luck! ❖

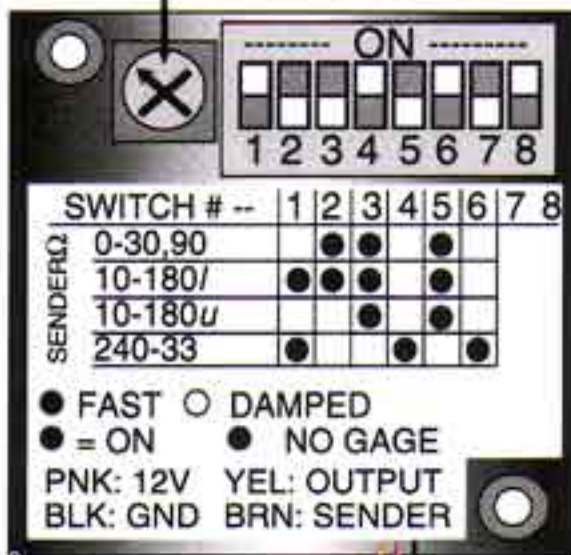


Photo #1



Photo #2

**ADJUSTMENT DIAL**



**Wiring Diagram**

Diagram #1

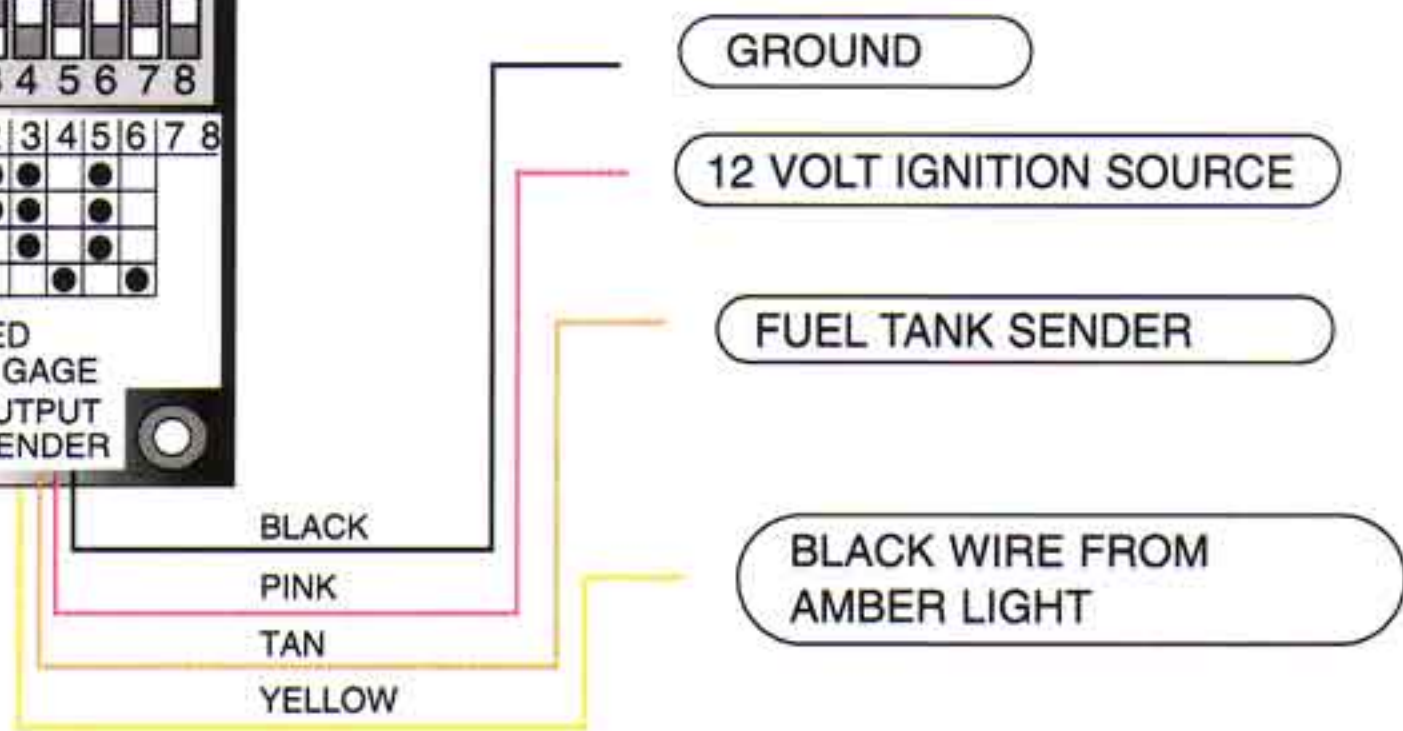




Photo #3



Photo #4

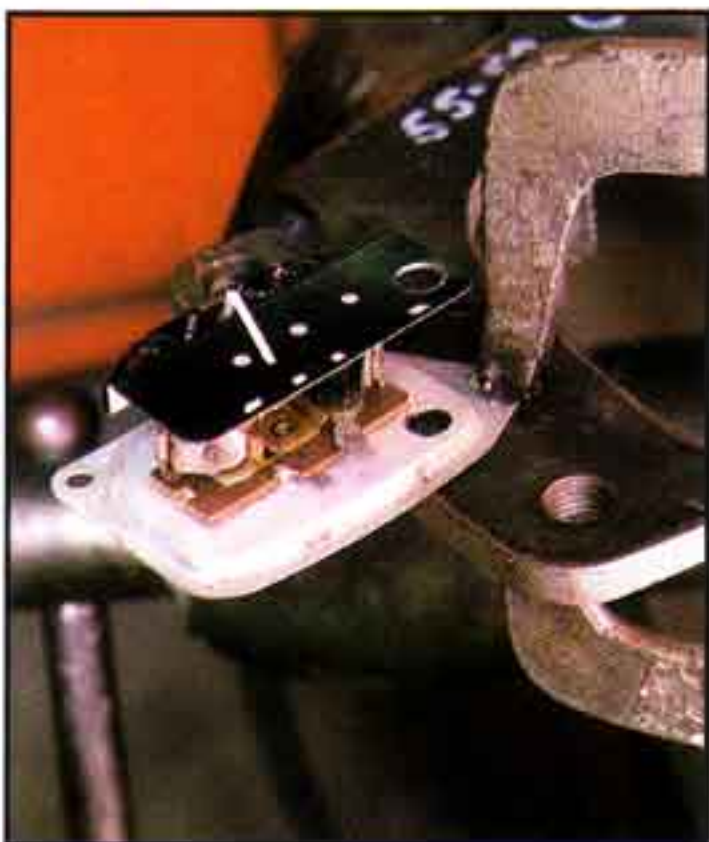


Photo #5

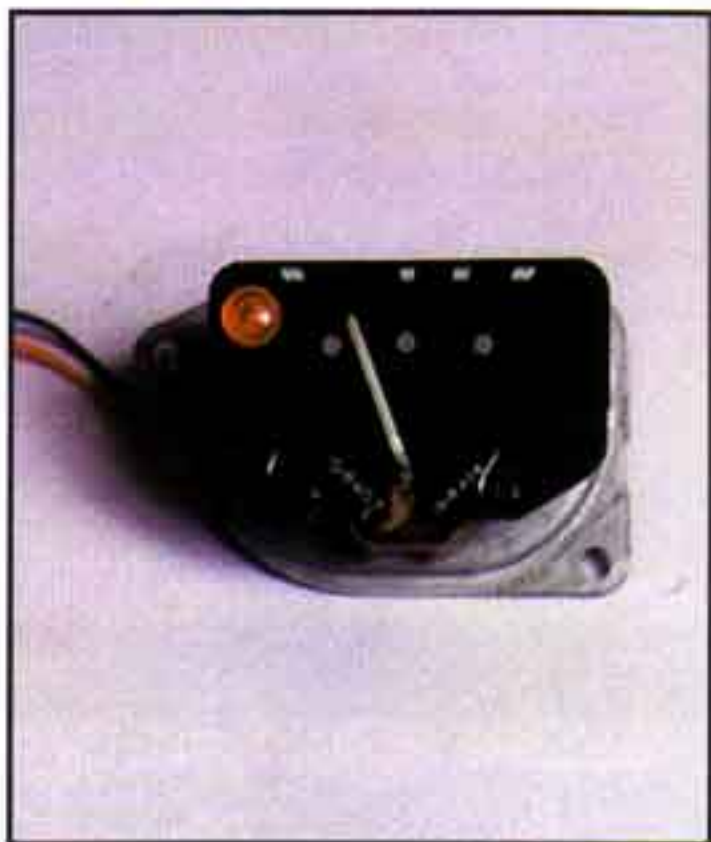


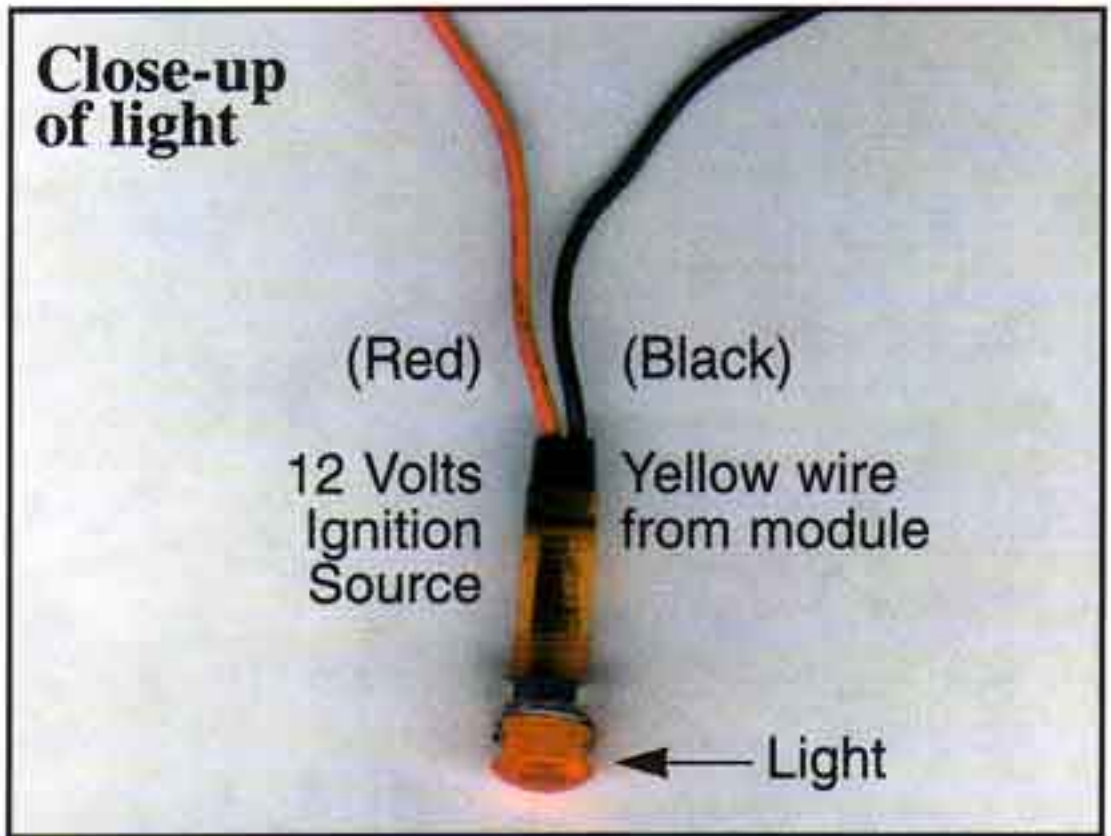
Photo #6



**Photo #7**



**Photo #8**



**Diagram #2**