

" THIS ARTICLE IS INTENDED FOR YOUR REFERENCE ONLY.

ACTUAL PARTS, YEARS AND BODY STYLES CONTAINED

IN THIS ARTICLE MAY DIFFER SLIGHTLY FROM YOUR APPLICATION. "

TECH HELP

We are always impressed at the number of really neat custom touches we see on modified cars at all of our conventions during the show season. One of the more subtle changes that we see and really like is the elimination of the vent window assembly. The result is a very clean looking and updated appearance. It is relatively easy to do and may actually save you a little money because you will not need to buy vent weatherstripping and rebuild your vent assemblies! Also, wind noise and water leaks will be reduced with this modification. Following is a list of parts you will find helpful in completing this installation:

<i>Part Number</i>	<i>Description</i>
36-24	Sedan whisker channel kit
36-80	Sedan lower door glass metal channels, pair
36-81	Sedan side glass setting kit
49-01	Window and door handle clip removal tool
17-150	The Tech Book — or —
8309	September, 1983 <i>Classic Chevy World</i> Tech Help photocopy

1) Begin by removing both front door panels from your classic. Remove the door access panels, window regulators, the door glass and tracks, vent window assemblies, etc... Your doors should be gutted of all internal components. Also remove the door beltline stainless and the fuzzy glass channel that fits in the inner frame of the door.

2) Remove the original vent braces from the inside of the door using a cutoff wheel or a hacksaw blade. (See Photo # 1.) Be sure to remove enough of the brace so that the new glass will have enough room to roll past without dragging on any protruding metal. (See Photo #2.) Clean the rough edges up with a file and prime to prevent future rust. Reinstall the beltline stainless on the outer door.

3) Install the reproduction sedan window channel clips on a 72-inch section of window channel, all included in the sedan whisker channel kit, **Part #36-24**. Also install the original rear metal vertical channel as shown in September, 1983 *Classic Chevy World* or the glass section of your *Tech Book*, **Part#17-150**. Once the clips and original metal channel are installed, form the flexible channel so it will fit properly in the door frame. The excess channel will fit into the door frame at the front where the vent assembly was once installed. Apply some weatherstripping adhesive to the portion of the flexible channel forward of the last clip position and to the corresponding area inside the door frame. This will secure the channel to the inside of the door once installed. Now install the channel in the door frame. (See Photo #3.) The channel should fit the door so that the forward edge of the channel hangs just below the beltline of the door. (See Photo #4.)

4) It is now necessary to modify the inner door so the new front vertical support channel can be installed. Drill a 5/16-inch hole 6 3/8-inches forward of the original lower vent adjustment stud hole in the inner door. Slot this hole with a small file so it is the same shape as the original. Next, drill a 1/4-inch hole in the inner door 5/8-inch above the oval vent regulator hole and 7/16-inch forward of the large vent bolt access hole. (See Photo #5.)

Vent window deletion—for all sedans and wagons

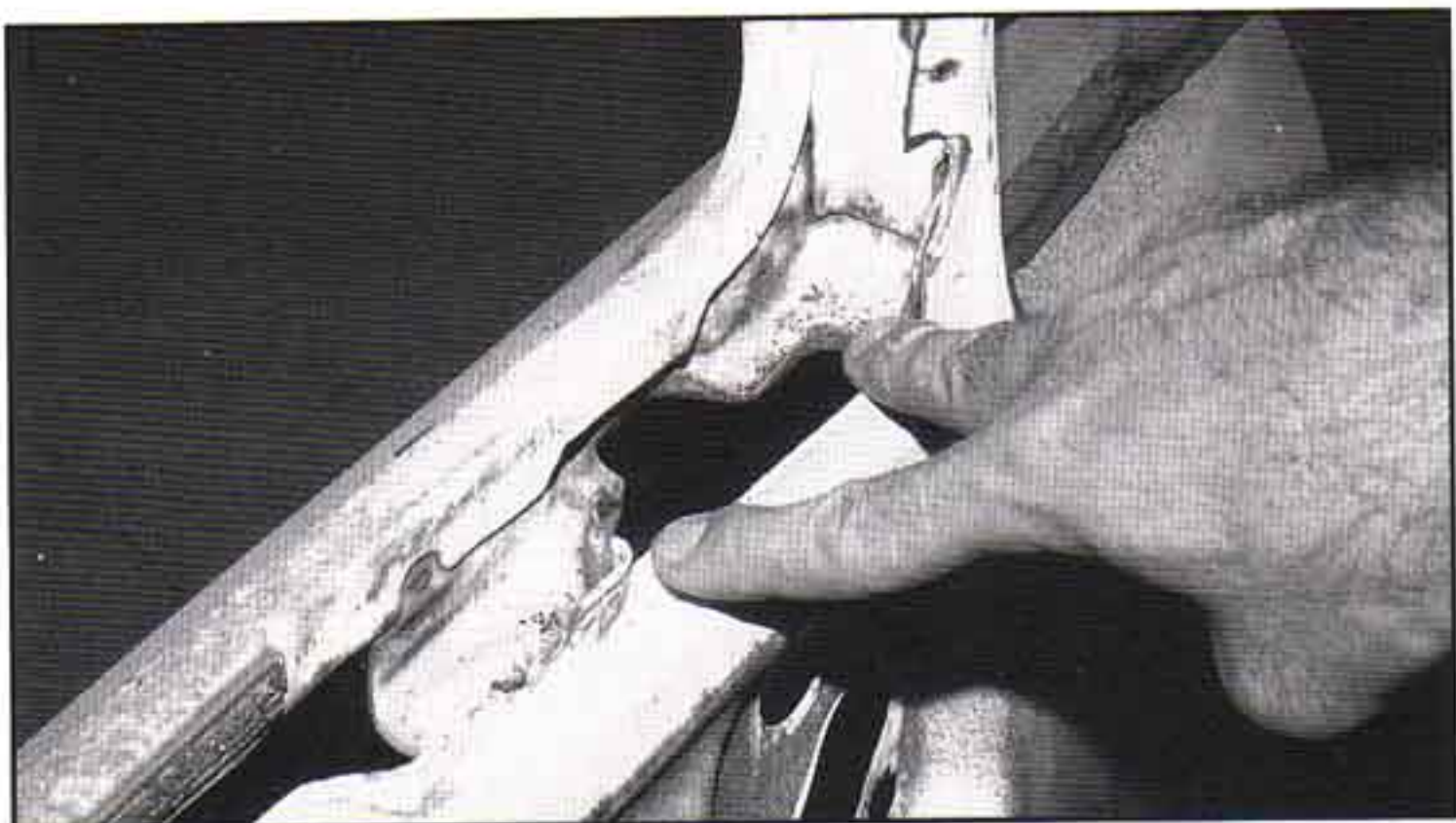


Photo #1



Photo #2



Photo #3

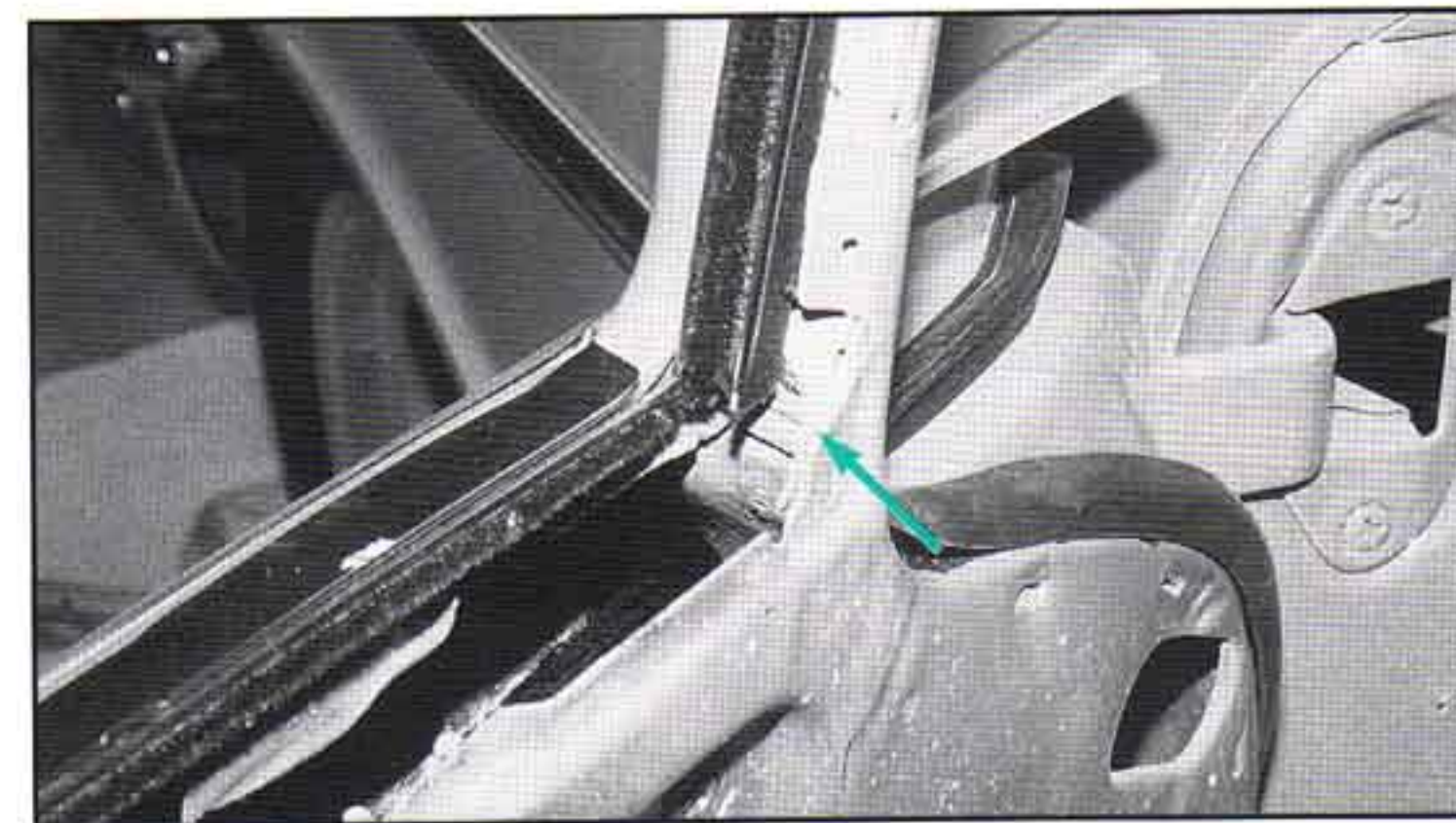
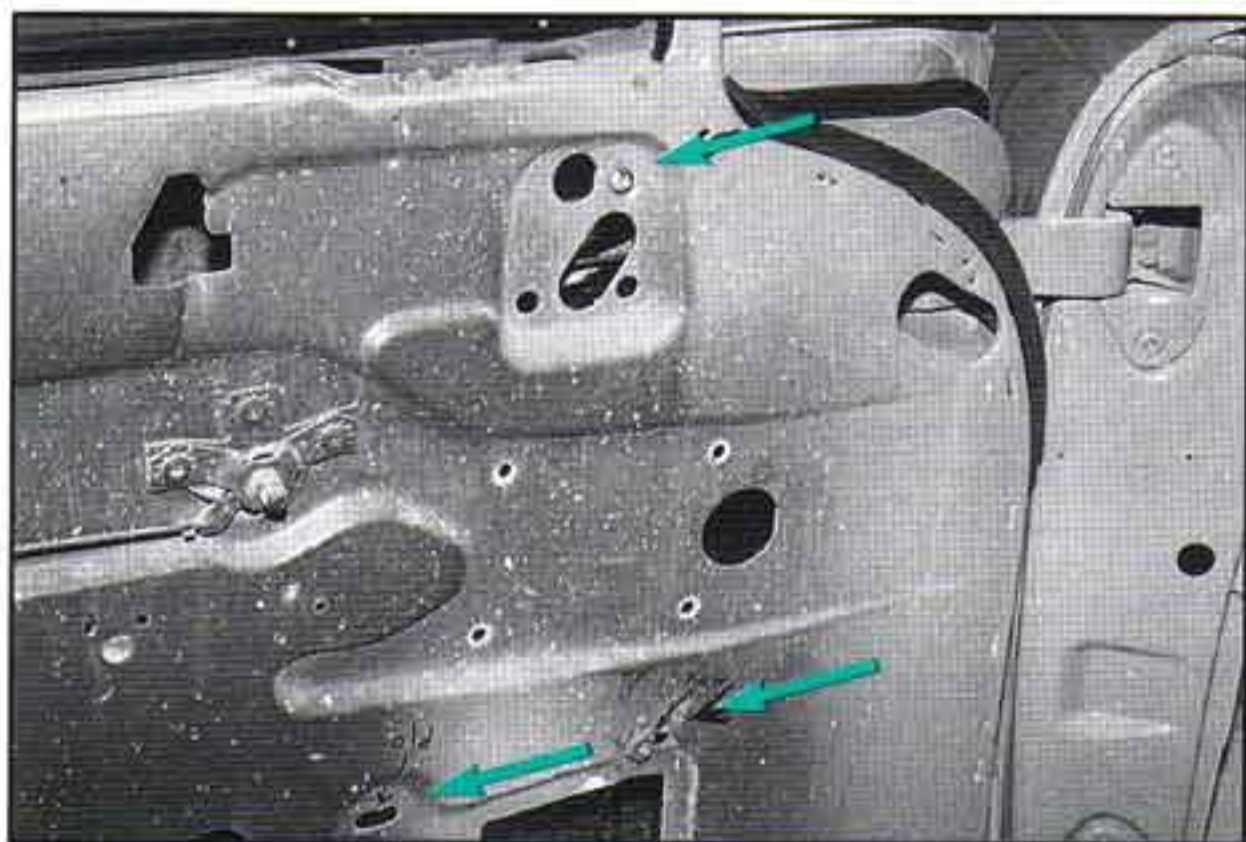


Photo #4

5) Cut the bottom 14-inches (overall length) off of each original lower vent assembly so that you have a channel that looks like ours does in [Photo #6](#). Also remove the original fuzzy glass channel from the metal channel. Cut a 14 1/2-inch section of new vertical vent channel, included in [Part #36-24](#), for each side. ([See Photo #7](#).) Install the vertical vent channel in the cut vent channel so that it is flush with the bottom of the channel and it overhangs at the top. ([See Photo #8](#).) Secure the vent channel to the original vent channel after drilling a 1/8-inch hole through both channels near the bottom. ([See Photo #9](#).) Use a short 1/8-inch counter-sunk machine screw and nut with the screw head inside the fuzzy channel to secure. Do not attach the channels at the top as any screw at this location will tend to drag on the forward edge of the door glass once installed.

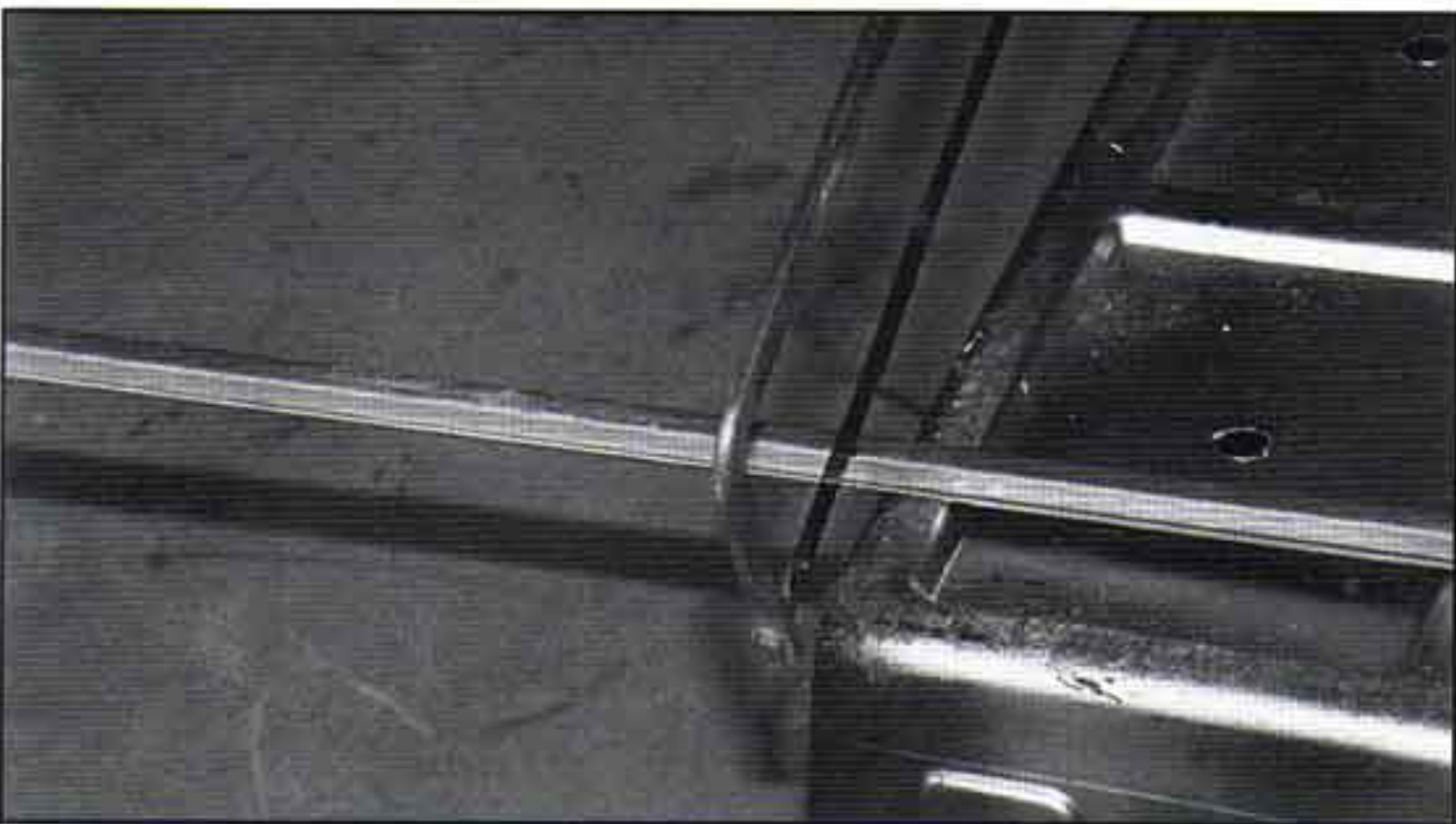
6) Drill a 1/8-inch hole in the top flange of the vent channel 1 1/4-inches from the top edge of the channel. ([See Photo #10](#).) Fabricate two steel brackets as shown in [Diagram #1](#). Attach these brackets to the vertical



[Photo #5](#)



[Photo #6](#)



[Photo #7](#)



Photo #8



Photo #9



Photo #10

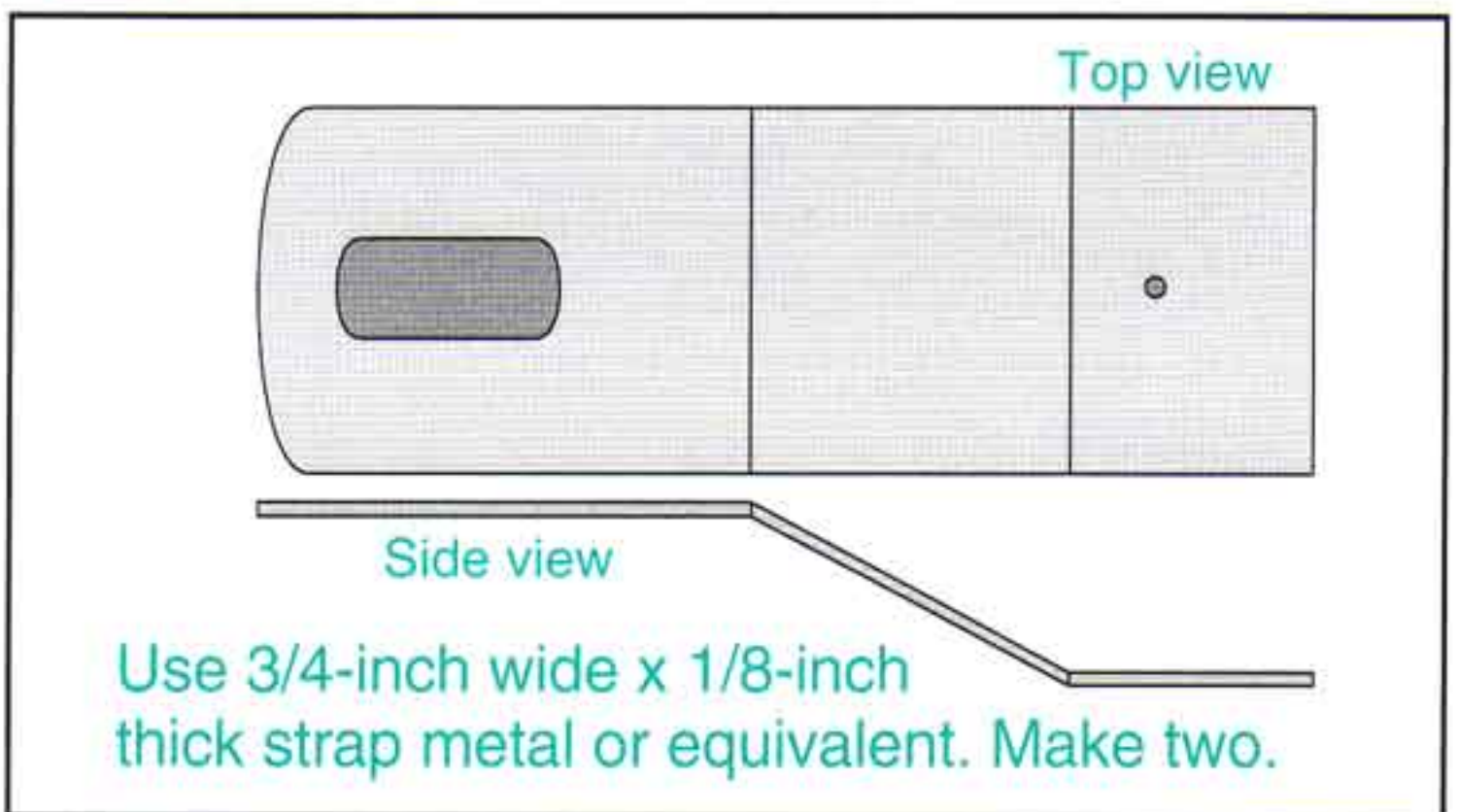
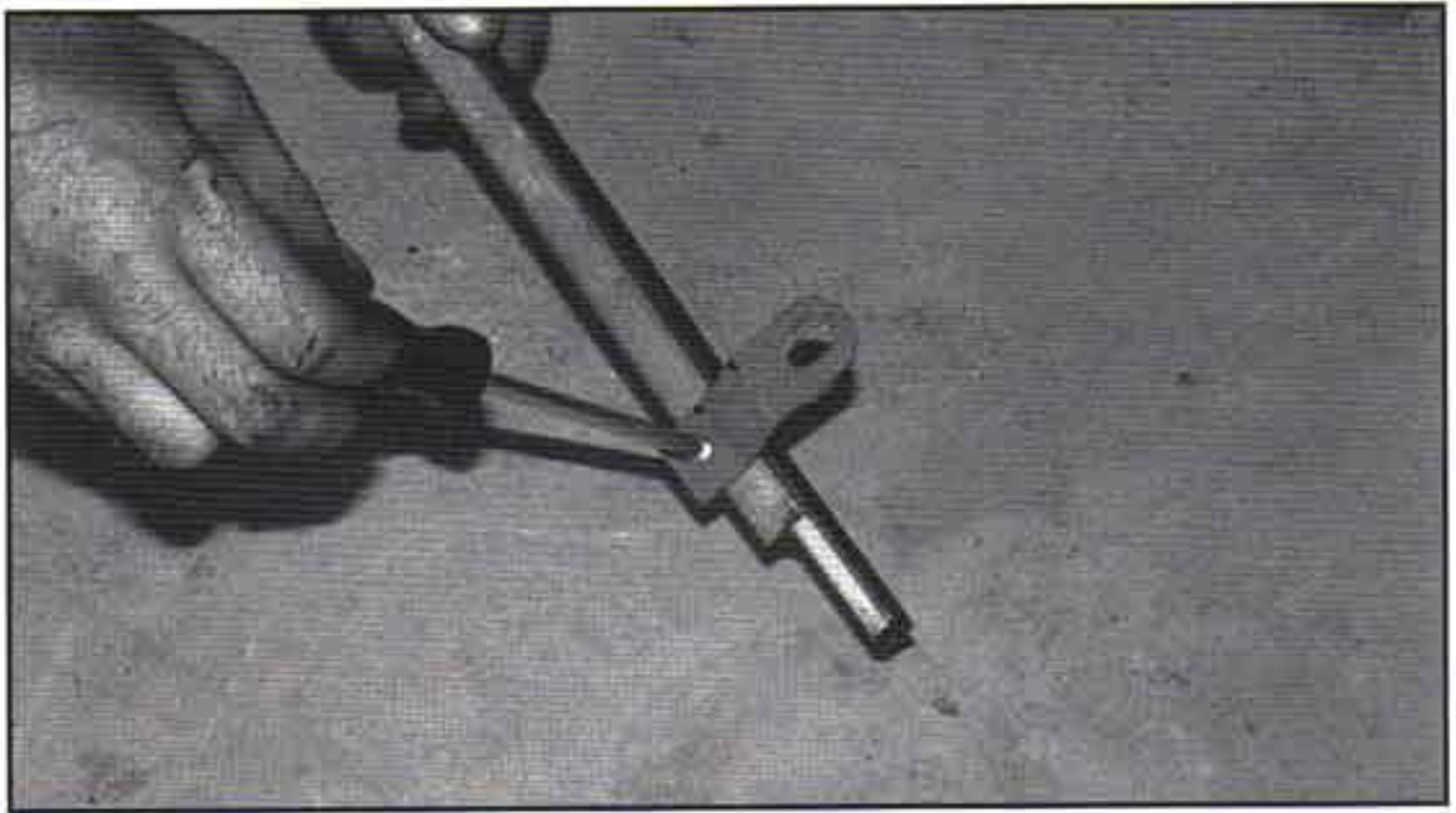


Diagram #1

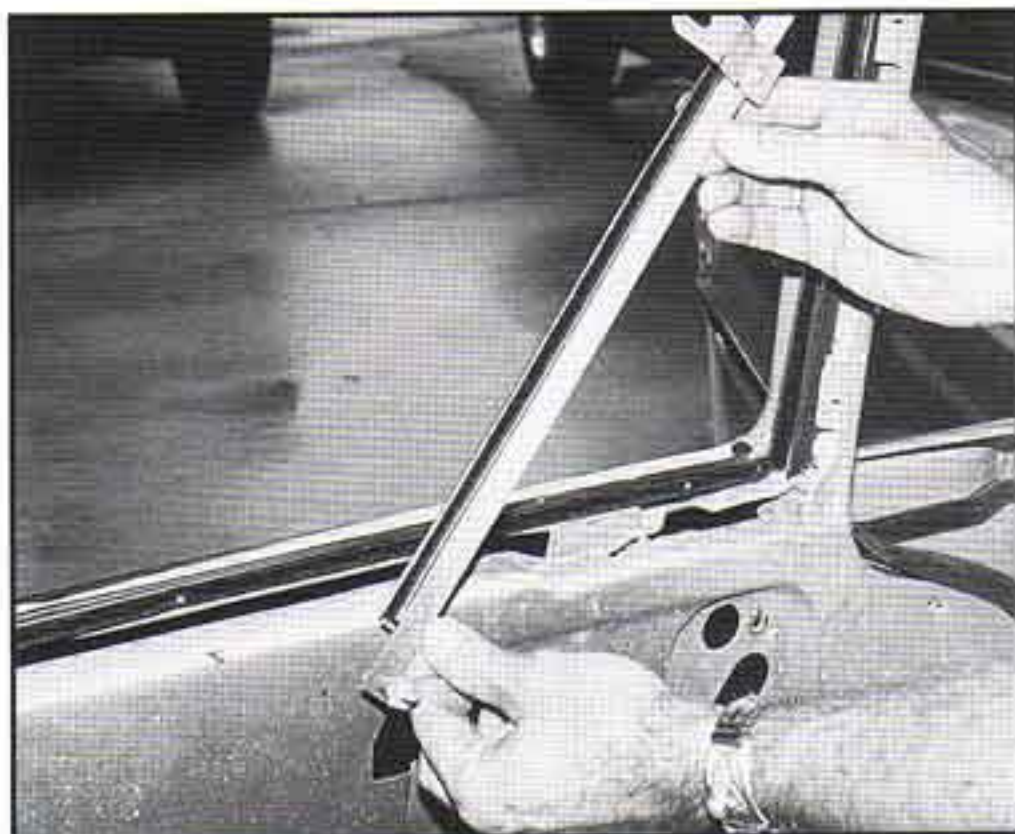
channels you just built so the bracket is oriented as shown in [Photo #11](#). Install the new channel and bracket assembly inside the door, as shown in [Photo #12](#). Attach the channel using the new holes you made using the original adjustment stud and nut at the bottom and a 1/4-inch x 1/2-inch long bolt and nut at the top.

7) At a local glass shop, have two new door glasses made to 32 3/8-inches overall length and 14 7/8-inches overall height. The forward edge of the new longer glass should be radiused at the top like the top rear edge is radiused. This will allow the new glass to fully roll up into the forward door frame. Install new lower setting channels, **Part #36-80**, on the new door glass using setting rubber, **Part #36-81**. Make certain the channels are installed 1/4 to 3/8-inch forward of the rear edge of the new glass. ([See Photo #13.](#))

8) Install the new glass in the door, making sure not to chip the edges! ([See Photo #14.](#)) Slip the glass down into the bottom of the door and engage the grooves in the channels at the front and the rear. It may be necessary to loosen the new forward channel in order to engage the glass in the channel. Push the glass all the way to the top of its travel, making sure that it glides freely in the channels. Lubricate if necessary with some silicon lubricant. Trap the glass in the up position using a screwdriver or masking tape and reinstall the door window regulator. ([See Photo #15.](#)) Install the original lower door glass regulator channel and engage the regulator. Attach the channel to the glass setting channel with original screws. Roll the glass up and down and continue making any adjustments needed. Reinstall the door access panels, door panels and other components removed previously. Your completed door glass installation should look like ours does in [Photo #16](#). Good luck! 🚗



[Photo #11](#)



[Photo #12](#)

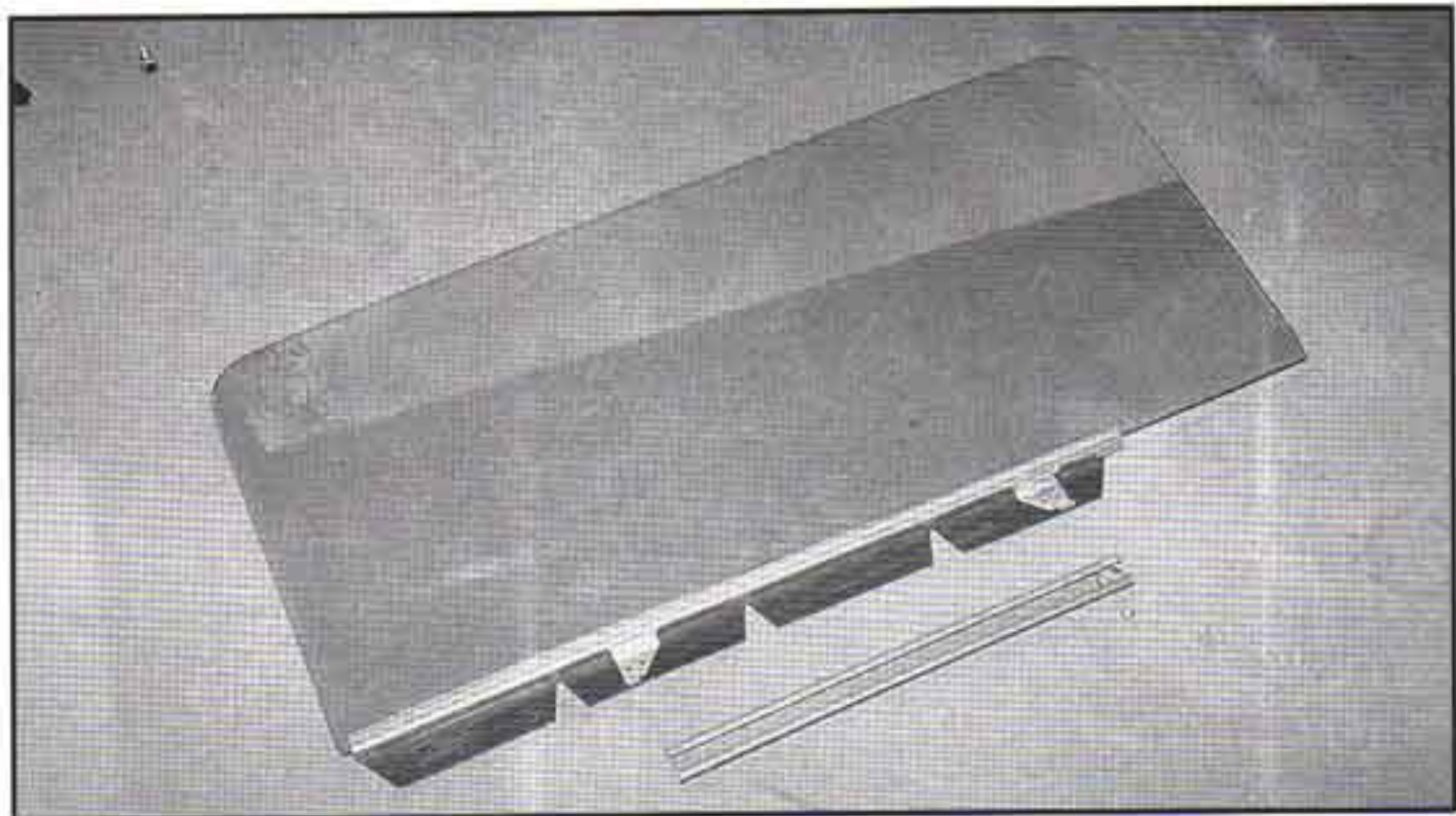


Photo #13

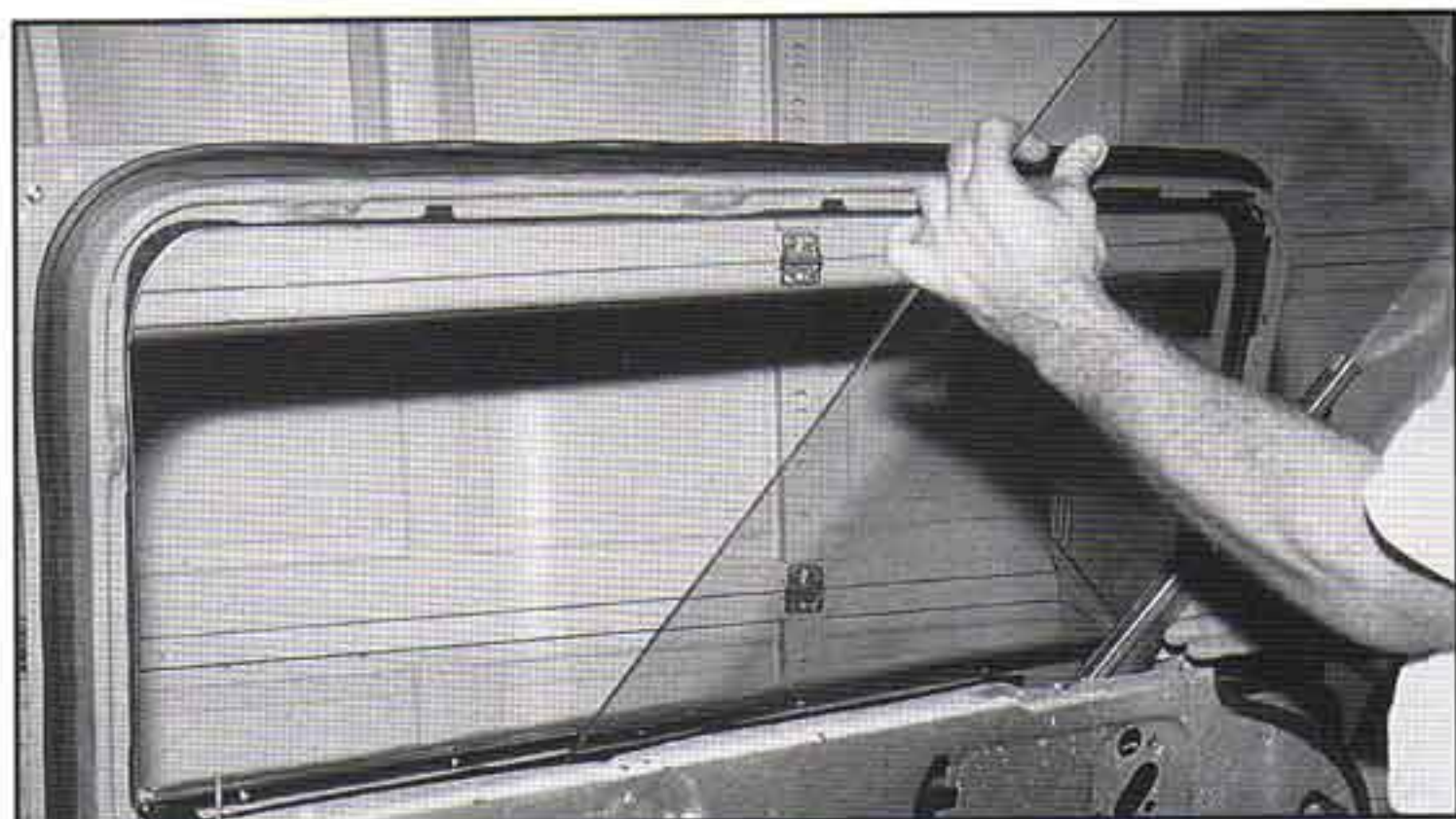


Photo #14



Photo #15



Photo #16